



September 13, 2017

We are pleased to announce that ACCG Retirement Services/GEBCorp has upgraded the Defined Benefit Pension Plan website. Effective September 1, 2017, your pension benefit information can be accessed directly at mypension.gebcorp.com

When you log in for the first time, you will need to register for the site using basic identification information to:

- establish a username and password
- update contact information
- set up your personalized Security Questions

You can find additional information on how to register for the site on page 2.

The website provides enhanced access to support assisting the following activities:

Active Participants and Inactive Participants who have not yet commenced their benefit:

- Learn about your pension benefit
- Estimate future payment amounts
- Request your pension benefit (once eligible)
- Review the information used to determine your pension benefit
- Retrieve administrative forms needed to assist in the administration of your pension
- Submit any questions to the GEBCorp administrative team

Please note if you have a 401(a) and/or 457(b) account with GEBCorp, you can continue to access your account information at www.GEBCorp.com.

If you have questions about this process, you may contact your GEBCorp Regional Client Manager, or GEBCorp Client Services at (800) 736-7166.

Sincerely,
GEBCorp Client Services

191 Peachtree Street
Suite 700
Atlanta, GA 30303
p 770.952.5225
t 800.736.7166
f 770.563.9356

gebcorp.com

Retirement Services.

Register For www.mypension.gebcorp.com

1. Click on Site Registration Information

GEBCorp
an ACCG company

My ACCG Pension Plan Portal

Please enter your username and password below.

Password

[Forgot Password?](#)

[Site Registration](#)

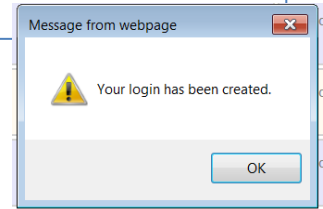
2. Complete Registration

My ACCG Pension Plan Portal

Please fill out the form to register to use this site.

Date of Birth: *	<input type="text"/>	Dates must be in MM/DD/YYYY format.
Social Security Number: *	<input type="text"/>	SSN may not include dashes.
Preferred Username: *	<input type="text"/>	Field must not be more than 20 characters.
Password: *	<input type="password"/>	Field must not be more than 15 characters.
Confirm Password: *	<input type="password"/>	Field must not be more than 15 characters.
Phone Number:	<input type="text"/>	Phone numbers must be in XXX-XXX-XXXX format.
Email Address:	<input type="text"/>	Email must be in abc@xyz.com format.

* = Required Field



3. Complete Security Questions

Security Questions Required

You must set up your security questions before gaining access to the rest of this site.

Security Question 1: Please select a security question...

Security Answer 1:

Security Question 2: Please select a security question...

Security Answer 2: Security Answer 2

Message from webpage

⚠ Your security questions and answers have been updated successfully.

4. Begin Using Site

Seal County Pension Plan Richard

My Data | Pension Modeling | Participant Services

Welcome!

Hi Richard,

Welcome to the My County Pension Plan Portal.

This site contains information to help you learn more about your retirement benefits.

Some of the capabilities of this site include the following:

- Review your personal data
- View my benefit summary
- Perform retirement modeling calculations
- Request forms needed for retirement

To use this site, use the links listed in the menu.